

Nazca Designs

What do you see?

Make a list of objects, figures that
you see:











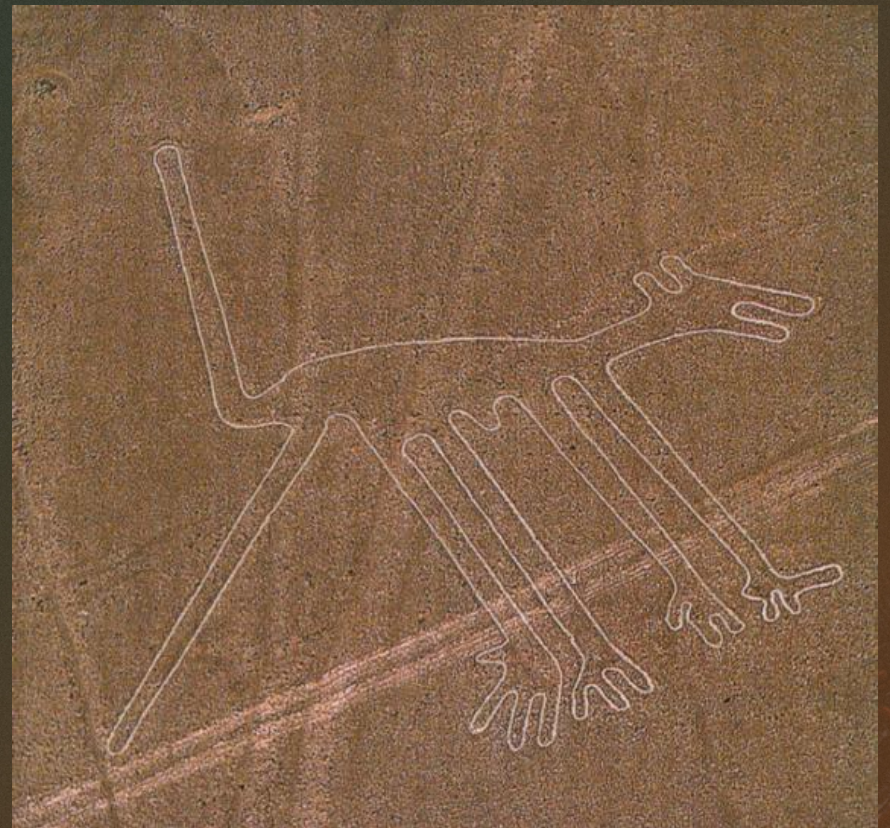


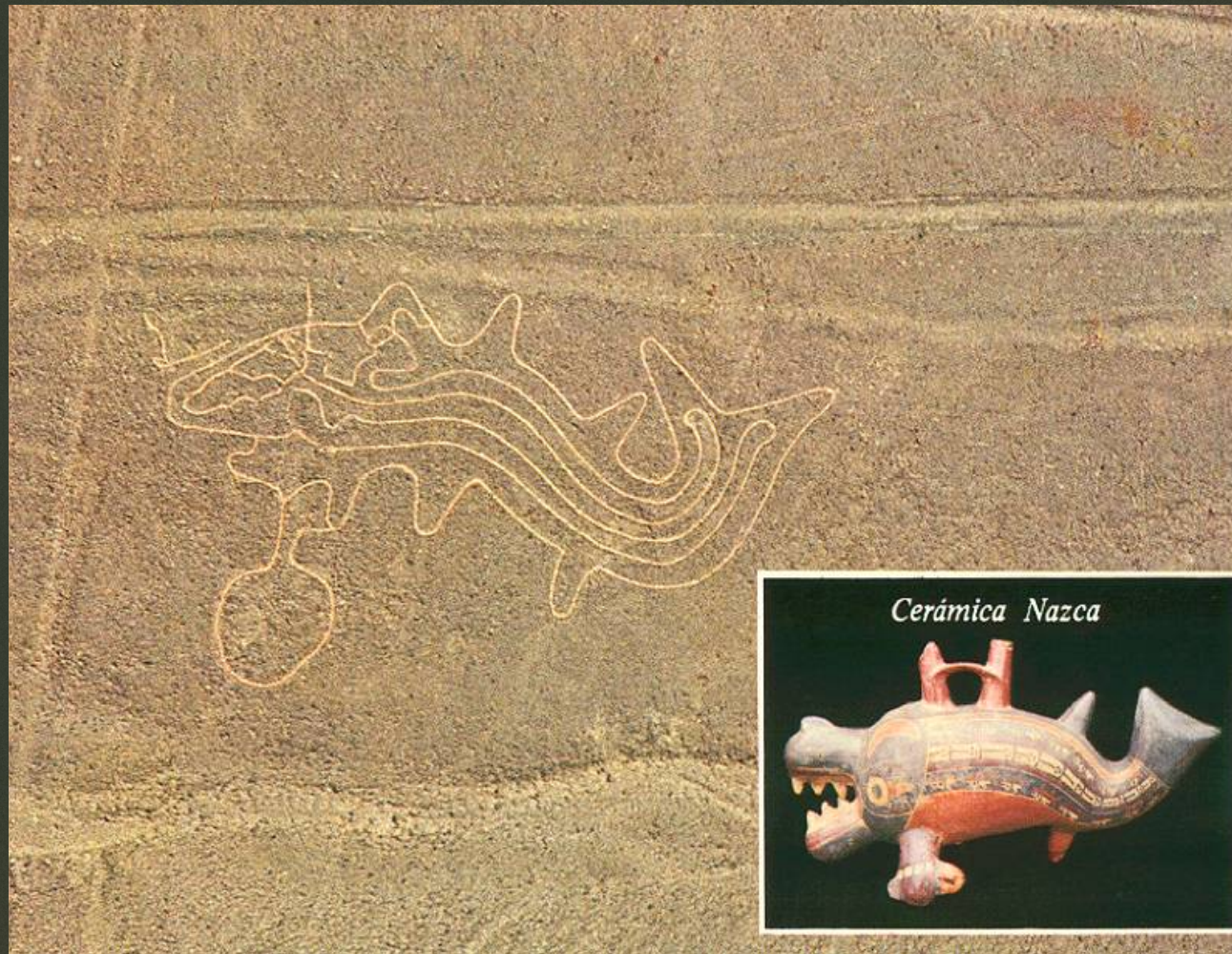
Now look at these designs
and compare...

















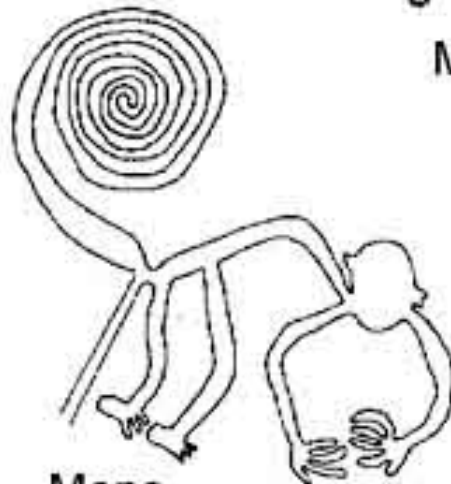
Pelicano



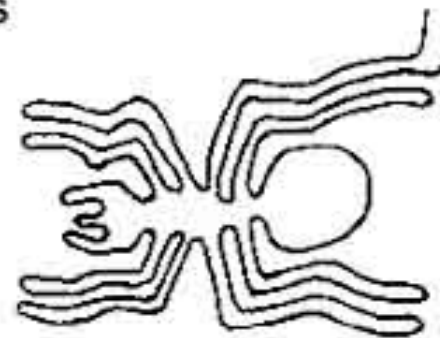
Manos



Ballena



Mono



Araña

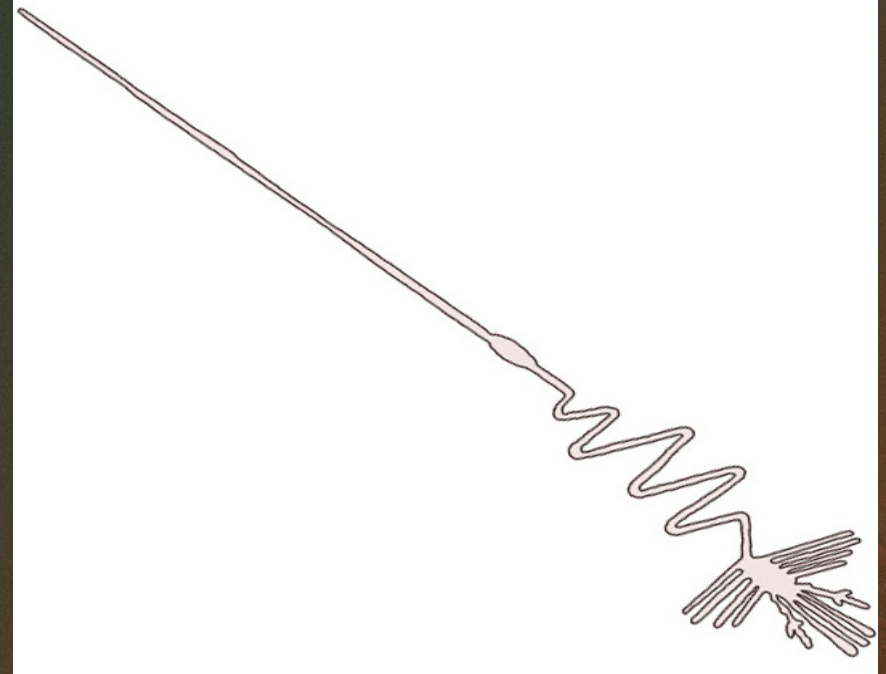
What do you see?
What do they have in
common?
How big do you think they
are?

Facts about Nazca

- Located in southern Peru, in a desertsic and arid plateau.
- The plateau stretches 80 Kms (50 miles), and is 400 Kms (250 miles) from Lima, the capital city of Peru.
- The largest figures are over 200 metres (660 ft) across.



This is the stork or heron...
It is 280 mts long =
approximately 918.6 ft. long



How were these lines made?

The lines are shallow designs made in the ground by removing the ubiquitous reddish pebbles and uncovering the whitish ground beneath



This is a “map” (although incomplete) of the Nazca lines on the plateau.

- What do you see?
- What do these drawings have in common?
- Would you consider them “Native Pre-Hispanic Art”
- Why?
- What elements make them artistic?

